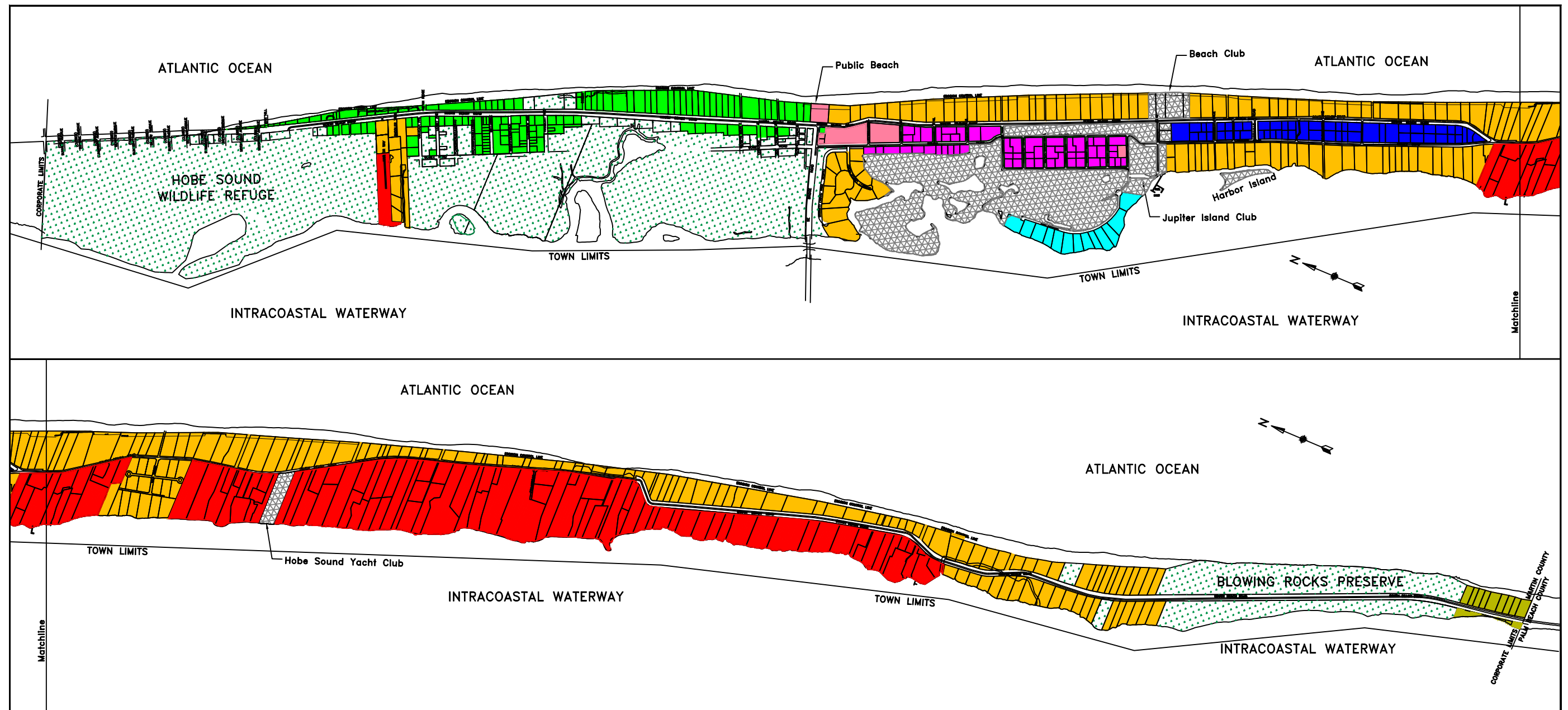


TOWN OF JUPITER ISLAND



Official Zoning Map



Revision: May 22, 2015

Sahagan & Bryant Associates, Inc.

- | | |
|--|--|
| ■ A-80 - 2-Acre Estate Residential District | ■ D-25 - Island Core Residential District |
| ■ B-40 - 1-Acre Estate Residential District | ■ E-12 - Island Core Residential District |
| ■ C-35 - Central Riverfront Residential District | ■ F-15 - Island Core Residential District |
| ■ CPD - Conservation/Preservation District | ■ PLD - Public Lands District |
| ■ G-35 - South Island Residential District | ■ RCD - Recreation Club District |

R. G. Orman and Company, Inc.
Public Planning and Management Consulting

ZONING MAP
TOWN OF
JUPITER ISLAND
MARTIN COUNTY, FLORIDA
ADOPTED _____ DATE _____

